



Center News

Cole Camp Senior Center
206 E. Junge St., Cole Camp MO, 65325



April 2026

Center Hours: Monday-Friday 8 a.m. to 2 p.m.

Activities

Fitness Exercise

Tuesdays & Thursdays
8:30-9:30 a.m.

Arm Chair Exercise

Mondays & Wednesdays
9-9:30 a.m.

Bingo

Thursdays, 10:45 a.m.

Art Class

Thursdays, 1-3 p.m.

Bead Class

Mondays, 9:30 a.m.

Coordinator: Janis Garren
Phone: 660-668-2352

Care Manager: Dee Locke
Phone: 660-668-2355

Tammy Wilkey: Family
Caregiver Coordinator,
660-438-3300, extension 3

Like us on Facebook
@ColeCampSeniorCenter

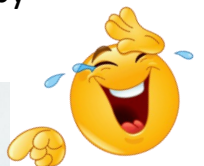
What's Happening at Cole Camp Senior Center?

**After our exercise class on Tuesdays and Thursdays,
We have an
Easy Line Dance Class
at 9:30 With Elaine Friedly**



Fire & Tornado Drills

On March 17th we had our Fire and tornado drills. I asked what would anyone do if someone fell, and Barbra O'Brian said she would drag them by the feet and preceded to show us by picking Alice up by her feet! **Poor Alice !**



We Need Help!

It has been around 6 weeks and we're still working on the 3000 piece puzzle together, it's a little challenging but we are determined to finish it.



Eat and Enter for Your Chance to Win

Every time you come to eat at the Cole Camp senior center you get a ticket to put in the pot and a chance to win this **55 inch TV!**

So come and enjoy a healthy meal and a chance to win every time you eat. Drawing will be Friday April 3rd at 12 noon.



Fun and Games

Prizes for our next "Mary's Card Game" April 14th at 11am come in and have fun playing the game with us and then have a "Taco Salad" meal after the game.



We had a **Find St. Patrick** contest in the dining room in March and Jo Ann Weinberg was the winner of the prize for finding St. Patrick!



Our Volunteer party



Thank you
to all of our AMAZING
volunteers!

We are planning a special time for you on
Wednesday April 8th, 5 p.m.
at Missouri Made Café, 105 East Main
I hope you can make it!

Our Center Needs....

- ★ Flour
- ★ Sugar
- ★ Brown Sugar
- ★ Tea
- ★ Coffee
- ★ Powdered sugar

See Janis for more information or to donate.



Categories For each list, write something that fits the category and starts with the given letter. For example if the category is Animals and the letter is L your answer could be "Lion." Consider challenging yourself by setting a time limit. Have fun!

List 1 Letter K

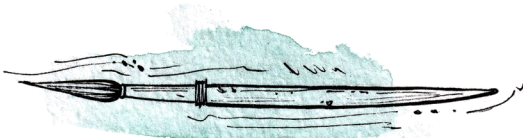
1. Fish _____
2. Junk Food _____
3. Kinds of Dances _____
4. Companies _____
5. Things on a Map _____
6. Items in a Suitcase _____
7. Reasons to Call 911 _____
8. Vacation Spots _____
9. Weekend Activities _____
10. U.S. Cities _____

List 2 Letter C

1. Toys _____
2. Presidents _____
3. Types of Drinks _____
4. Street Names _____
5. Girls Names _____
6. Book Titles _____
7. Languages _____
8. Sandwiches _____
9. Flowers _____
10. Cartoon Characters _____

Famous Artists Word Fill-in

Fill in the frame with the words from the bank. One word has been filled in to start you off.



4-Letters

Dali

5-Letters

Bosch

Kahlo

Klimt

Monet

6-Letters

Benton

Renoir

Seurat

Turner

Warhol

7-Letters

Picasso

Raphael

Vermeer

8-Letters

Basquiat

~~Mondrian~~

Rockwell

9-Letters

Delacroix

Rembrandt

10-Letters

Botticelli

12-Letters

Michelangelo

